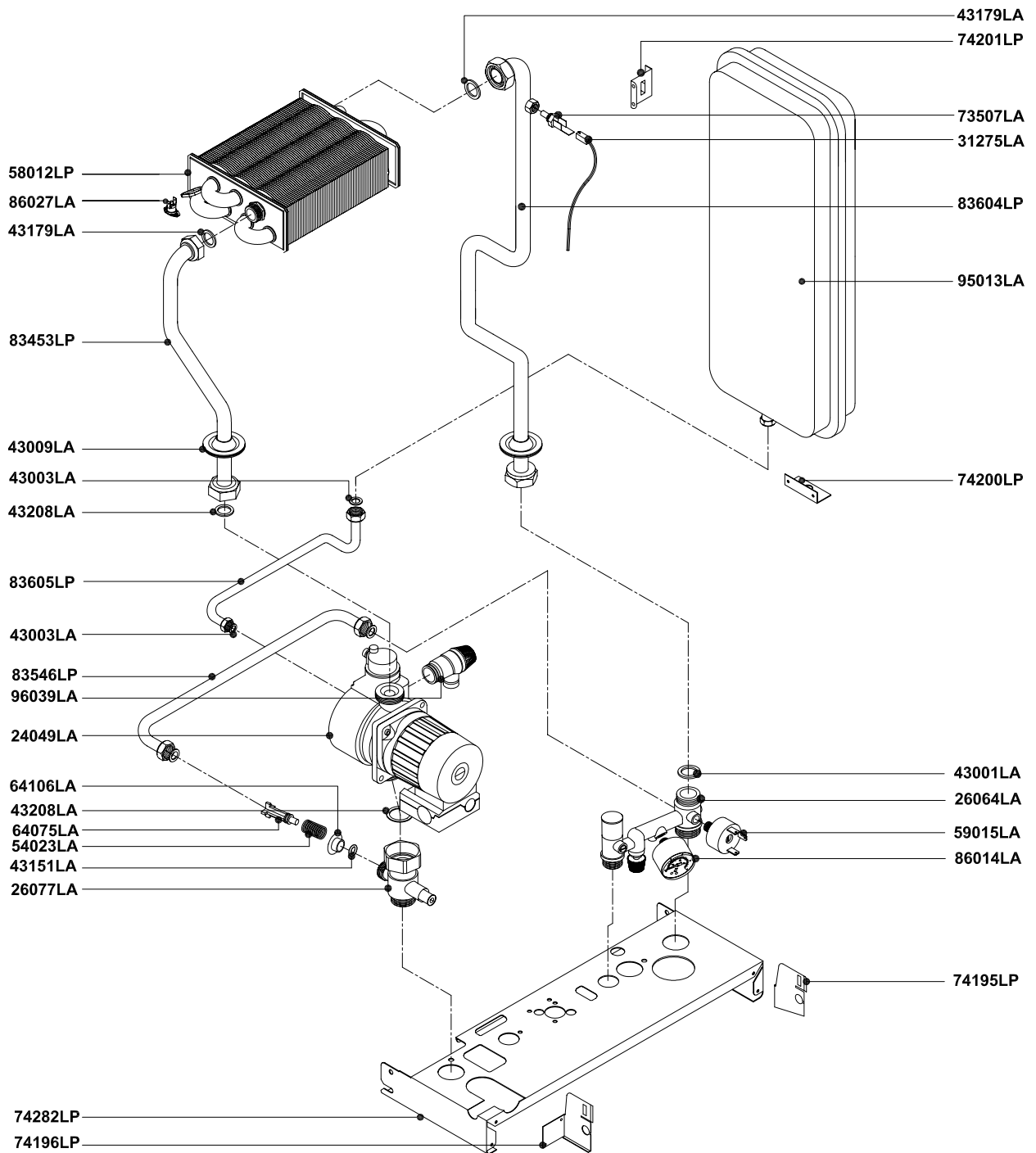

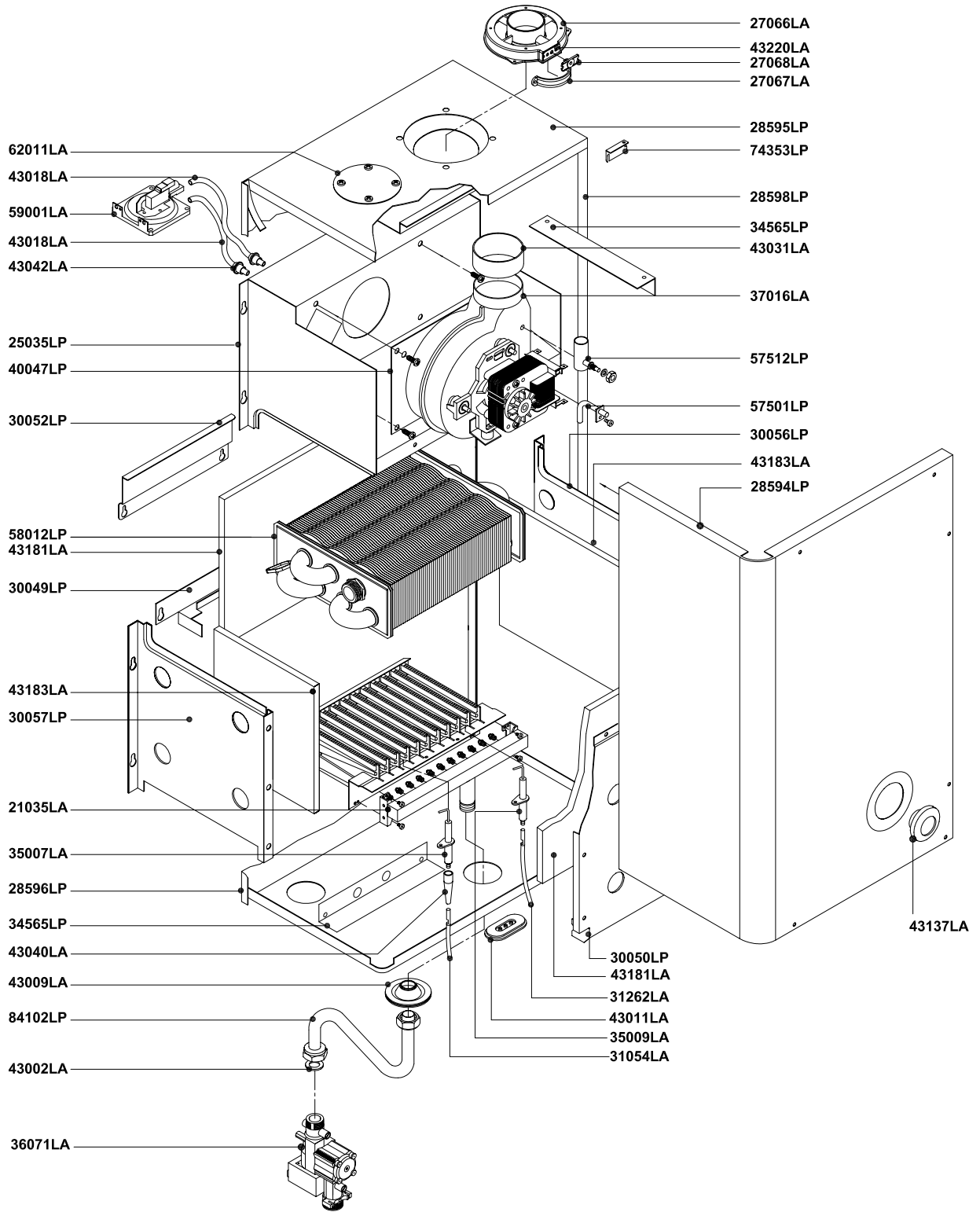


Pos.	Code	Description:	Date:	U.M.	Qt.
		Description: <b>Wall hung boiler - Spare parts</b> <b>FRAME + CASING COMPONENTS</b>	06.09.2004		methane
		Object / model: <b>mod. RS 20 E</b> <i>room sealed - electronic ignition</i>	Scale:		L.P.G.
			Department: <b>tecnico</b>	Code no.:	
	Designed by:				heavy oil
	Controlled by:				
	Approved by:				Sheet no.: <b>B0383_AE1</b>
ALL DESCRIPTIONS AND ILLUSTRATIONS CONTAINED IN THIS LEAFLET HAVE BEEN CAREFULLY PREPARED BUT WE RESERVE THE RIGHT TO MAKE CHANGES AND IMPROVEMENTS IN OUR PRODUCTS WHICH MAY AFFECT THE ACCURACY OF THE INFORMATION CONTAINED IN THIS LEAFLET. E + 0E ALL RIGHTS RESERVED. NO PART OF THIS DOCUMENT MAY BE REPRODUCED, SAVED IN STORAGE SYSTEMS OR TRANSMITTED IN ANY FORM OR BY ANY MEANS, WHETHER ELECTRONIC, MECHANICAL, PHOTOCOPIING, RECORDING OR OTHERS, WITHOUT THE MANUFACTURERS PRIOR AUTHORISATION IN WRITING.					

Rev.	Description	Date
------	-------------	------

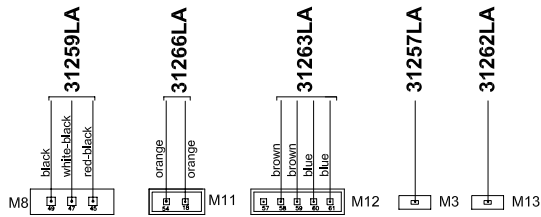


Pos.	Code	Description:	U.M.	Qt.
		Description:	Date: 06.09.2004	A991A112B101 methane
		<b>Wall hung boiler - Spare parts</b>	Scale:	A991B112B101 L.P.G.
		<b>HYDRAULIC SYSTEM</b>	Department: tecnico	
		Object / model:	Designed by:	heavy oil
		<b>mod. RS 20 E</b>	Controlled by:	
		<i>room sealed - electronic ignition</i>	Approved by:	Sheet no.: <b>B0384_AE1</b>
 <small>RADIANT BRUCIATORI S.p.A.</small>				
<small>ALL DESCRIPTIONS AND ILLUSTRATIONS CONTAINED IN THIS LEAFLET HAVE BEEN CAREFULLY PREPARED BUT WE RESERVE THE RIGHT TO MAKE CHANGES AND IMPROVEMENTS IN OUR PRODUCTS WHICH MAY AFFECT THE ACCURACY OF THE INFORMATION CONTAINED IN THIS LEAFLET. E + OE ALL RIGHTS RESERVED. NO PART OF THIS DOCUMENT MAY BE REPRODUCED, SAVED IN STORAGE SYSTEMS OR TRANSMITTED IN ANY FORM OR BY ANY MEANS, WHETHER ELECTRONIC, MECHANICAL, PHOTOCOPIING, RECORDING OR OTHERS, WITHOUT THE MANUFACTURER'S PRIOR AUTHORIZATION IN WRITING.</small>				

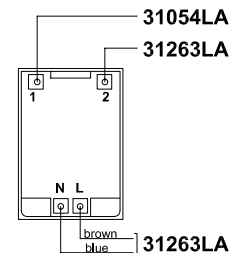
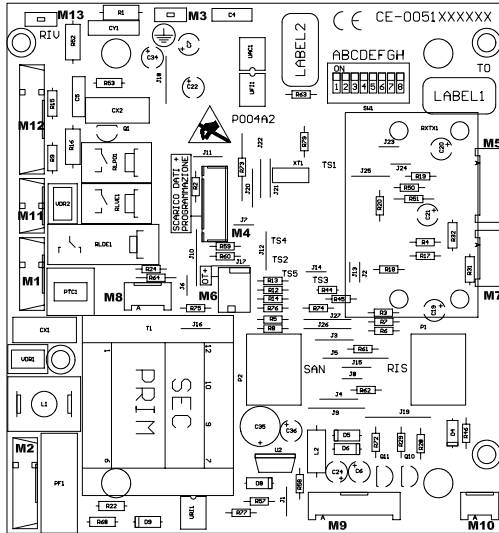


Pos.	Code	Description:	U.M.	Qt.
		Description: <b>Wall hung boiler - Spare parts</b> <b>THERMAL SYSTEM</b>		
		Object / model: <b>mod. RS 20 E</b> <i>room sealed - electronic ignition</i>		
		Date: 06.09.2004	A991A112B101	methane
		Scale:	A991B112B101	L.P.G.
		Department: tecnico		
		Designed by:		heavy oil
		Controlled by:		
		Approved by:	Sheet no.:	<b>B0385_AE1</b>
<small>ALL DESCRIPTIONS AND ILLUSTRATIONS CONTAINED IN THIS LEAFLET HAVE BEEN CAREFULLY PREPARED BUT WE RESERVE THE RIGHT TO MAKE CHANGES AND IMPROVEMENTS IN OUR PRODUCTS WHICH MAY AFFECT THE ACCURACY OF THE INFORMATION CONTAINED IN THIS LEAFLET, E + OE ALL RIGHTS RESERVED. NO PART OF THIS DOCUMENT MAY BE REPRODUCED, SAID IN STORAGE SYSTEMS OR TRANSMITTED IN ANY FORM OR BY ANY MEANS, WHETHER ELECTRONIC, MECHANICAL, PHOTOCOPIING, RECORDING OR OTHERS, WITHOUT THE MANUFACTURER'S PRIOR AUTHORIZATION IN WRITING.</small>				

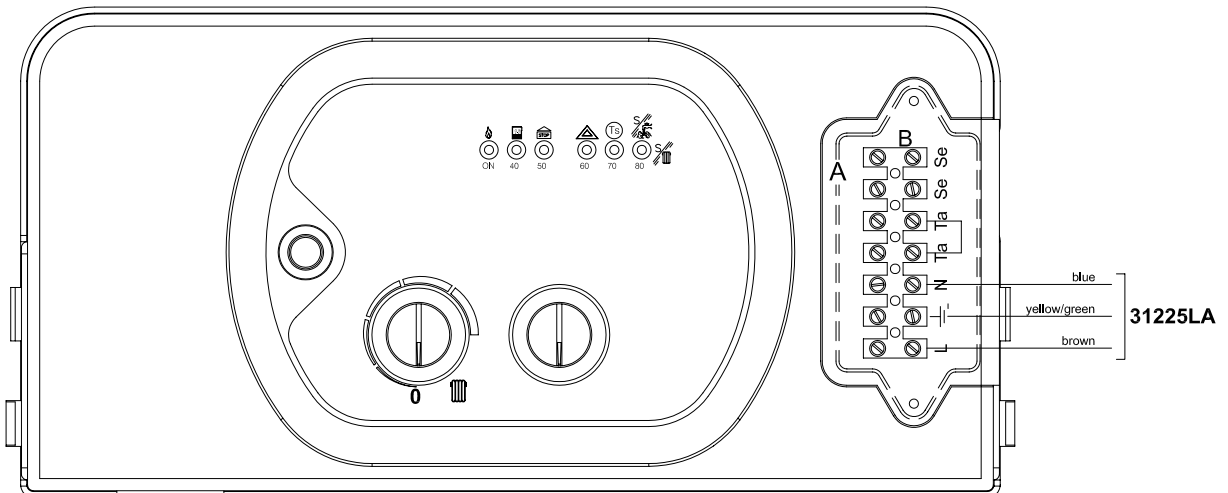
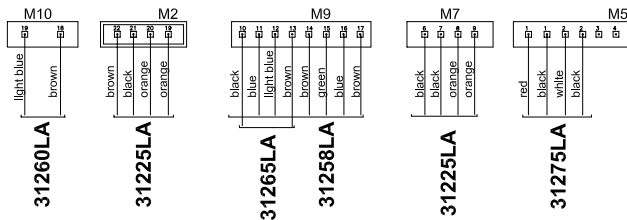




**PRINTED CIRCUIT BOARD SM30001 (COD. 76666LA)**



**TRANSFORMER 697250 64  
COD. 88018LA**



Pos.	Code	Description:	U.M.	Qt.
		Description: <b>Wall hung boiler - Spare parts</b> <b>ELECTRIC SYSTEM</b>		
		Object / model: <b>mod. RS 20 E</b> <i>room sealed - electronic ignition</i>		
		Date: 06.09.2004	A991A112B101	methane
		Scale:	A991B112B101	L.P.G.
		Department: tecnico		
		Designed by:		heavy oil
		Controlled by:		
		Approved by:	Sheet no.:	<b>B0386_AE1</b>

ALL DESCRIPTIONS AND ILLUSTRATIONS CONTAINED IN THIS LEAFLET HAVE BEEN CAREFULLY PREPARED BUT WE RESERVE THE RIGHT TO MAKE CHANGES AND IMPROVEMENTS IN OUR PRODUCTS WHICH MAY AFFECT THE ACCURACY OF THE INFORMATION CONTAINED IN THIS LEAFLET, E + OE ALL RIGHTS RESERVED. NO PART OF THIS DOCUMENT MAY BE REPRODUCED, SAVED IN STORAGE SYSTEMS OR TRANSMITTED IN ANY FORM OR BY ANY MEANS, WHETHER ELECTRONIC, MECHANICAL, PHOTOCOPIING, RECORDING OR OTHERS, WITHOUT THE MANUFACTURER'S PRIOR AUTHORIZATION IN WRITING.